



Constitutional and Nomination Committee

Date: Monday, 4 November 2019

Time: 2.00 pm

Venue: Council Antechamber, Level 2, Town Hall Extension

This is a **supplementary agenda** containing additional information about the business of the meeting that was not available when the agenda was published

Access to the Council Chamber

Public access to the Council Chamber is on Level 2 of the Town Hall Extension, using the lift or stairs in the lobby of the Mount Street entrance to the Extension. That lobby can also be reached from the St. Peter's Square entrance and from Library Walk. **There is no public access from the Lloyd Street entrances of the Extension.**

Membership of the Constitutional and Nomination Committee

Councillors - Karney (Chair), Curley, Flanagan, Lanchbury, Leech, Leese, N Murphy, S Murphy, Razaq and Reeves

Supplementary Agenda

- | | | |
|-----|--|-------|
| 1.1 | Urgent Business - Amendments introduced at the meeting
At the meeting revised proposals for the Didsbury East Ward were introduced by the City Solicitor. The proposals included changes to Appendix 1 and 2 of the report. | 3 - 6 |
|-----|--|-------|

Further Information

For help, advice and information about this meeting please contact the Committee Officer:

Beth Morgan
Tel: 0161 234 3043
Email: b.morgan@manchester.gov.uk

This supplementary agenda was issued on **Monday 4 November 2019** by the Governance and Scrutiny Support Unit, Manchester City Council, Level 6, Town Hall Extension (Mount Street Elevation), Manchester M60 2LA

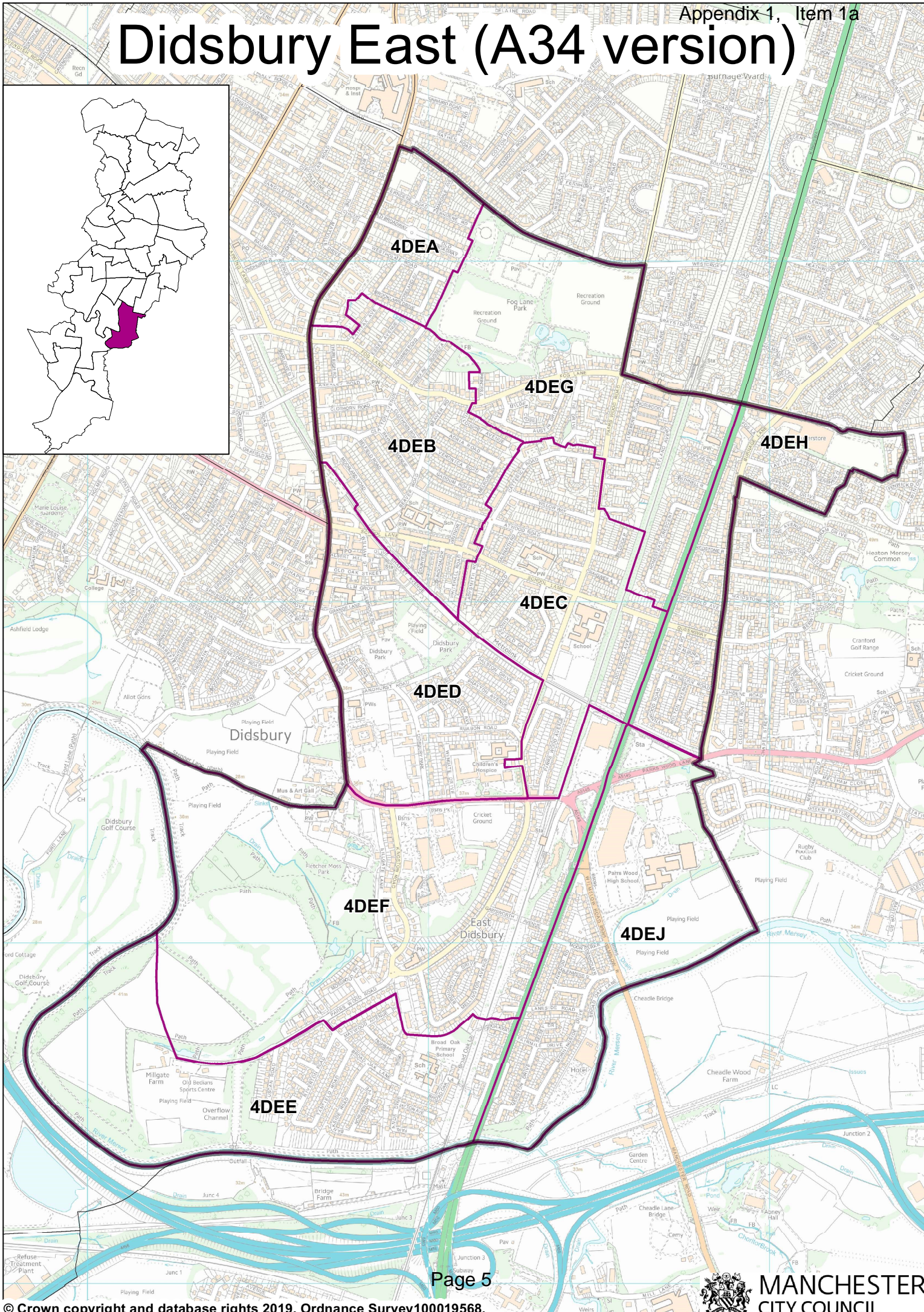
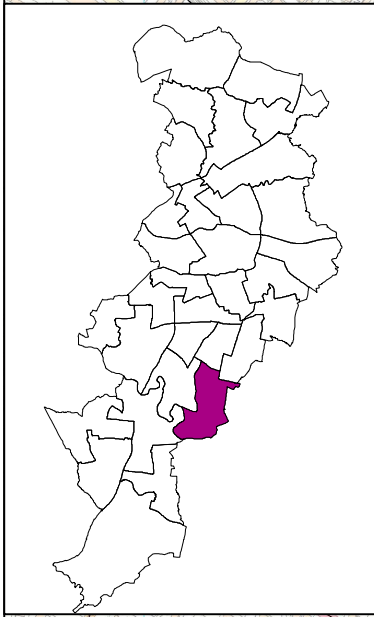
Didsbury East

Street Name	PD Ref	Property Numbers	Prop Count	Elector Count	NEW PD
Bankside Road	4DEE	Odds 1 to 49, Evens 88 to 2	69	135	4DEE
Broadoak Lane	4DEE	Odds 19 to 101, Evens 100 to 70	62	140	4DEE
Cranston Drive	4DEE	Odds 1 to 5, Evens 6 to 2	6	13	4DEE
Fairmile Drive	4DEE	Odds 1 to 19, Evens 18 to 2	20	39	4DEJ
Farlands Drive	4DEE	Odds 1 to 23, Evens 48 to 2	37	88	4DEE
Glenlea Drive	4DEE	Odds 1 to 13, Evens 14 to 2	14	33	4DEE
Highbank Drive	4DEE	Odds 1 to 55, Evens 34 to 2	45	109	4DEE
Jayton Avenue	4DEE	Odds 1 to 29, Evens 30 to 2	30	65	4DEE
Kingsway	4DEE	Evens 962 to 900, Odds 905 to 953	104	157	4DEJ
Malgam Drive	4DEE	Odds 1 to 5, Evens 6 to 2	6	17	4DEE
Maywood Avenue	4DEE	Odds 1 to 39, Evens 32 to 2	36	75	4DEE
Merston Drive	4DEE	Odds 1 to 49, Evens 54 to 2	54	124	4DEJ
Millgate Lane	4DEE		2	4	4DEE
Moresby Drive	4DEE	Odds 1 to 9, Evens 10 to 2	10	15	4DEE
Morningside Drive	4DEE	Odds 41 to 109, Evens 70 to 20	61	117	4DEJ
Norview Drive	4DEE	Odds 1 to 39, Evens 26 to 2	33	60	4DEE
Oakway	4DEE	Odds 1 to 7, Evens 4 to 2	6	9	4DEJ
Parrs Wood Road	4DEE	Odds 565 to 591	15	28	4DEE
Riverton Road	4DEE	Odds 3 to 61, Evens 60 to 2	60	107	4DEE
Selsey Drive	4DEE	Odds 1 to 23, Evens 10 to 2	17	35	4DEJ
Tanfield Road	4DEE	Odds 1 to 77, Evens 68 to 2	73	140	4DEE
Tuscan Road	4DEE	Odds 1 to 43, Evens 42 to 2	44	82	4DEE

Avalon Drive	4DEF	Odds 1 to 7, Evens 8 to 2	8	14	4DEF
Broughville Drive	4DEF	Odds 1 to 21, Evens 40 to 2	31	55	4DEF
Crandon Drive	4DEF	Odds 1 to 7, Evens 8 to 2	8	17	4DEF
Denholm Road	4DEF	Odds 1 to 11, Evens 12 to 2	12	26	4DEJ
Gawsworth Avenue	4DEF	Odds 1 to 19, Evens 22 to 2	13	25	4DEF
Glenmere Road	4DEF	Odds 1 to 15, Evens 16 to 2	16	33	4DEJ
Greenview Drive	4DEF	Odds 1 to 7, Evens 8 to 2	8	16	4DEF
Greylands Road	4DEF	Odds 1 to 13, Evens 14 to 2	14	26	4DEJ
Kingston Avenue	4DEF	Continuous 3 to 2	3	3	4DEF
Kingston Road	4DEF	Odds 41 to 69, Evens 66 to 2	46	86	4DEF
Kingsway	4DEF	Odds 831 to 903	37	76	4DEJ
Kingsway	4DEF	Evens 896 to 804	40	79	4DEF
Laneside Road	4DEF	Odds 1 to 13, Evens 32 to 2	23	38	4DEJ
Mellington Avenue	4DEF	Odds 1 to 115, Evens 84 to 2	102	218	4DEF
Millgate Lane	4DEF	Odds 7 to 43, Evens 108 to 100	50	71	4DEF
Moor Park Road	4DEF	Odds 1 to 19, Evens 10 to 2	15	33	4DEJ
Morningside Drive	4DEF	Odds 5 to 39, Evens 18 to 2	28	46	4DEJ
Mosswood Park	4DEF	Odds 1 to 19, Evens 20 to 2	20	38	4DEF
Newlands Drive	4DEF	Odds 1 to 11, Evens 12 to 2	12	28	4DEF
Oakdale Drive	4DEF	Odds 1 to 5, Evens 6 to 2	6	14	4DEF
Parrs Wood Road	4DEF	Odds 415 to 561, Evens 578 to 400	174	361	4DEF
Stenner Lane	4DEF	Evens 20 to 18, Stenner Brow	3	9	4DEF
Wilmslow Road	4DEF	Evens 868 to 852	8	16	4DEF
Wilmslow Road	4DEF	Evens 918 to 870	194	252	4DEF
Winwood Road	4DEF	Odds 1 to 17, Evens 42 to 2	30	63	4DEJ

This page is intentionally left blank

Didsbury East (A34 version)



This page is intentionally left blank